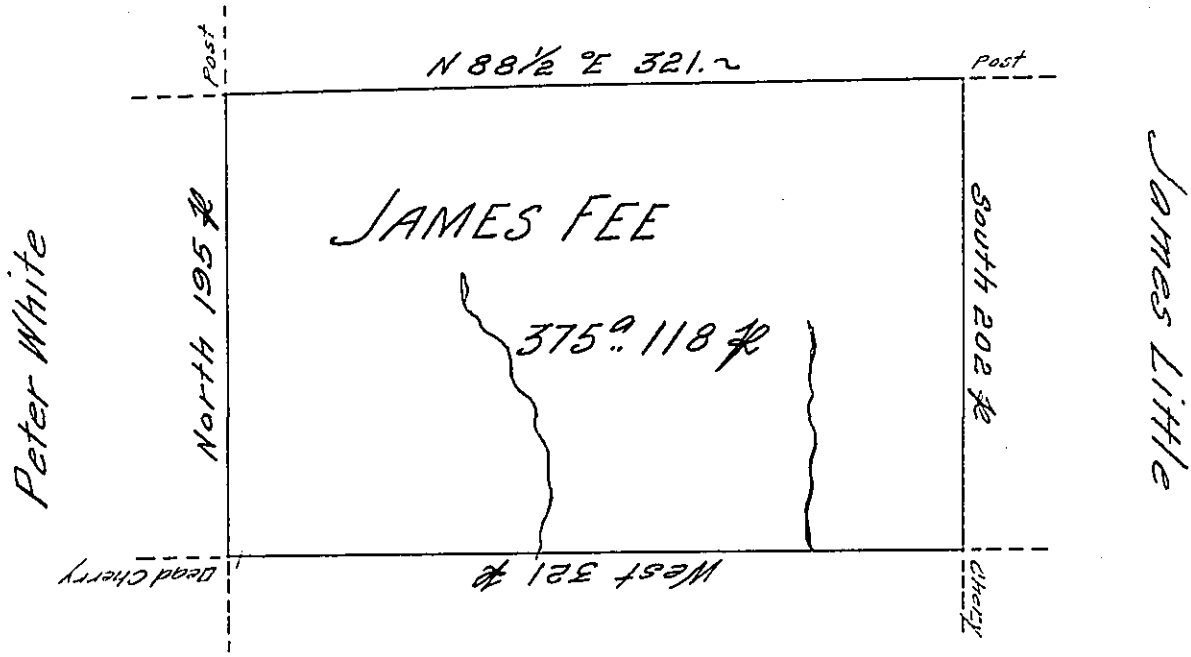


District Line



John Ryan's

Situate on the East Side of French Creek in Allegheny County Containing 375° 118 # and Allowance of Six # Cent for Roads & Surveyed the 27th Day of May 1795 In pursuance of his Improvement Dated the 27th Day of May 1795 —

W^m Power D^y. Sr.

To Dan^l. Brodhead Esquire }
 Surveyor General }

IN TESTIMONY that the above is a copy of the original remaining on file in the Department of Internal Affairs of Pennsylvania, made conformably to an Act of Assembly approved the 16th day of February, 1833, I have hereunto set my Hand and caused the Seal of said Department to be affixed at Harrisburg, this twenty-ninth day of May 1906

Loack J. Brown
 Secretary of Internal Affairs